
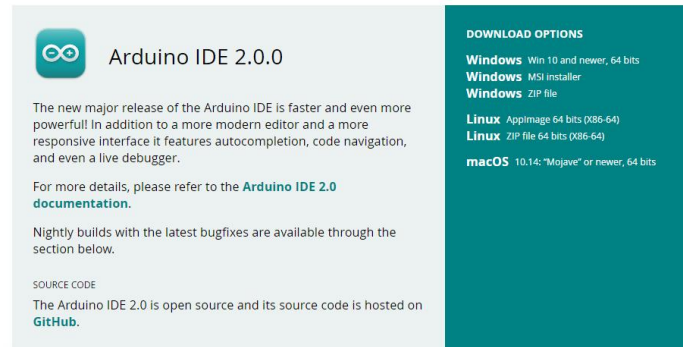


# Arduino IDE Installation and Usage Tutorial

1. Enter Arduino's official website: <https://arduino.cc/>;

2. Click  on the home page to enter the download page;

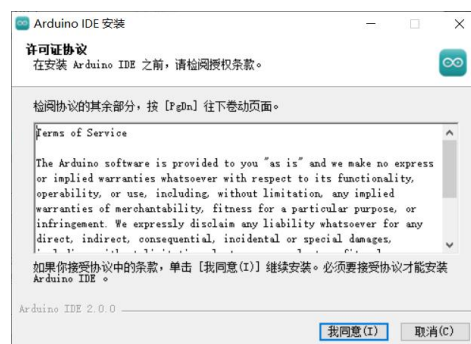
## Downloads



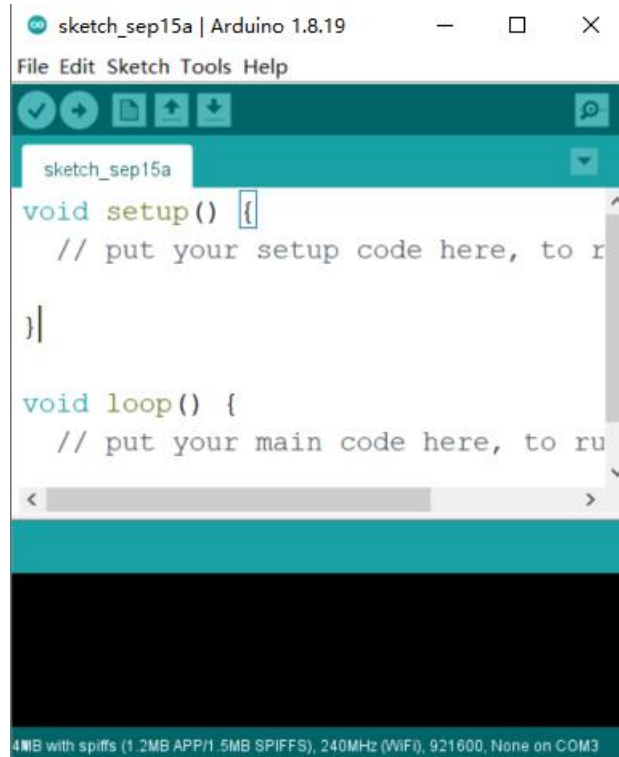
3. Select the corresponding system version to download the installation package;



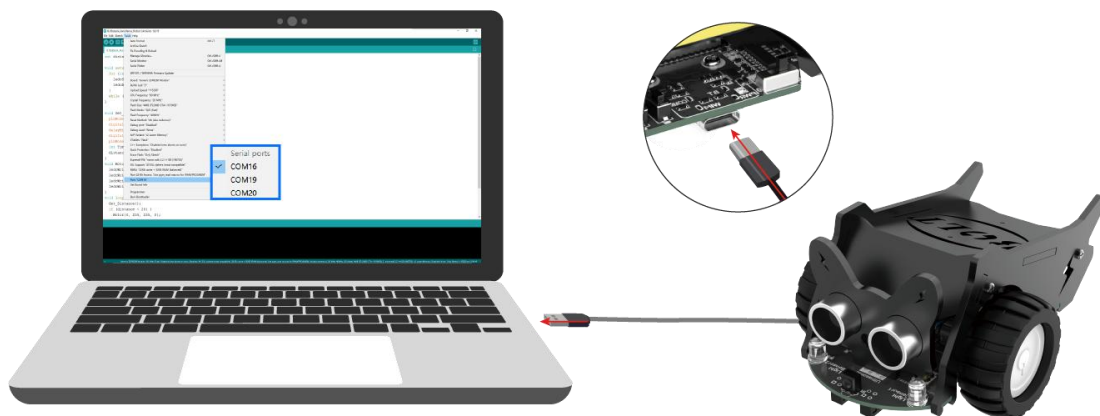
4. Open the installation package, select the installation path, and install the Arduino software;



5. Open Arduino IDE;



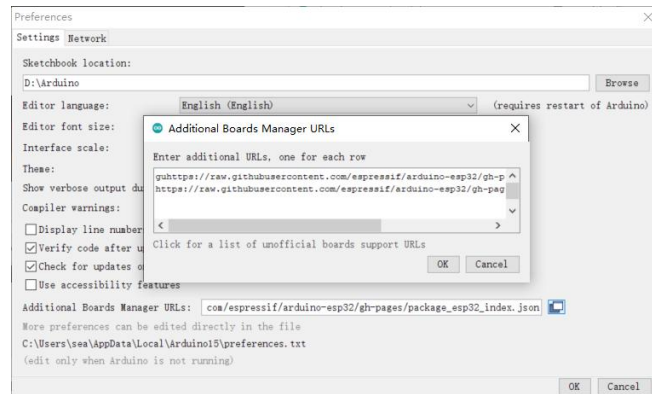
6. Connect the CrowBot-BOLT with the computer via the USB cable;



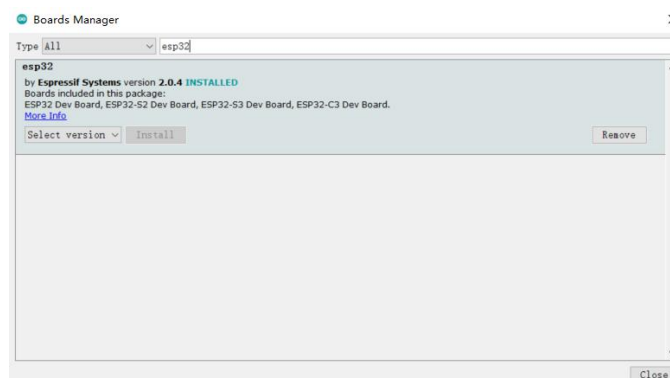
7. Click File ->Preferences ->Additional Development Board Manager URLs->Add the following URLs:

[https://raw.githubusercontent.com/espressif/arduino-esp32/gh-pages/package\\_esp32\\_dev\\_index.json](https://raw.githubusercontent.com/espressif/arduino-esp32/gh-pages/package_esp32_dev_index.json)

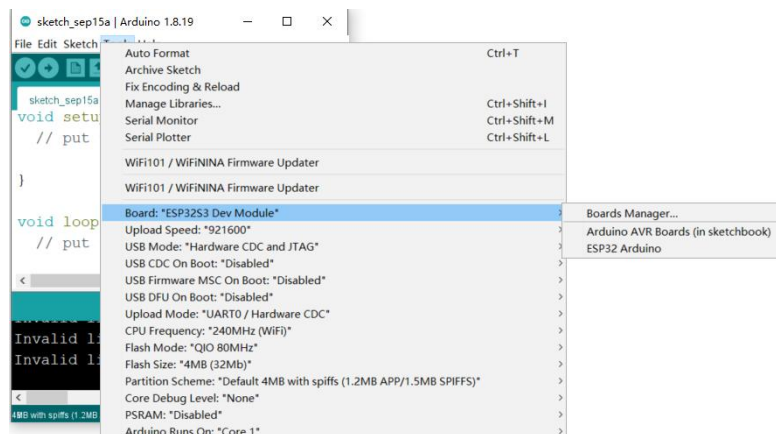
[https://raw.githubusercontent.com/espressif/arduino-esp32/gh-pages/package\\_esp32\\_index.json](https://raw.githubusercontent.com/espressif/arduino-esp32/gh-pages/package_esp32_index.json)



8. Install the esp32 hardware package. Click Tools ->Board ->Board Manager. Then search for esp, find esp32, and click Install.



9. Click "Tools"->"Board" above the menu bar to pop up the motherboard selection window;



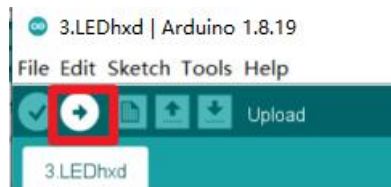
10. Click "ESP32 Arduino" and select "ESP32-WROOM-DA Module" motherboard from the pull-down menu;



11. Click "Tools" -> "Port", and select the corresponding serial port;



12. After editing the program, you can save the program to the computer. Click the Upload button below the menu bar to download the program.



13. After the program is successfully downloaded, it will be prompted that the download is successful, and then it can be executed.

