



Make Your Making Easier

Product Catalog

■ CONTENTS

■ About Elecrow	1
■ Where We Started	1
■ Crowbits	2
■ Raspberry Pi All-in-One Kit	5
■ CrowBot-BOLT	6
■ Open Source Hardware	7
■ Display Series	8
■ HMI Display	10
■ CrowVision	11
■ IoT	12
■ Partner Sellers' Products	15
■ Our Service	16

About Elecrow

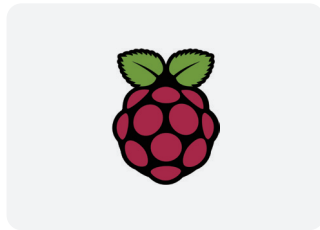
Elecrow is a company specializing in the R&D, design (prototyping), and manufacturing of electronics. Founded in 2014, the company has grown to become a leading supplier of open-source hardware and electronic components, offering a wide range of products and services to customers around the world.

Where We Started

Arduino, Raspberry Pi and Micro:bit are the most popular open source hardware brands. We provide compatible products to help people learn and practice electronics. Most of the electronic modules selling on Elecrow website were designed and manufactured by ourselves.



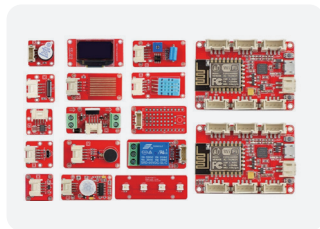
Arduino Learning Kit Compatible
Shield and Modules



Raspberry Pi Learning Kit, Display,
Enclosure and Other Related Items



Micro:bit Learning Kit and
Related Modules



Elecrow Electronics Modules and
Accessories



reddot winner 2021

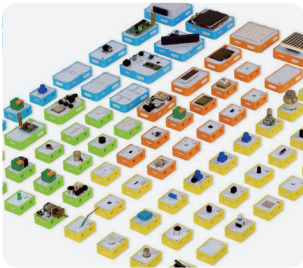


Crowbits is a magnetic, programmable, electronic blocks, which empower children of all STEM skill levels to move their STEM education forward today.



- 80+ Module
- Magnetic Pogo Pin
- Compatible with Lego
- Graphical Programming
- Courses

Feb, 2021



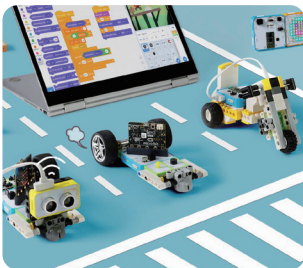
80 + color coded electronic modules for kids to create infinite possibilities



Comes with a programming software– Letscode, build projects by simple drag and drop



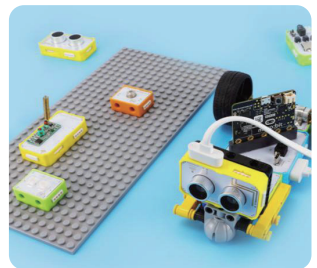
Plug and Play design for easy connection of modules



Compatible with common hardware platforms like Arduino, micro:bit, ESP32



Ample course materials for both learners and educators



Compatible with LEGO for an even more exciting educational fun



6+

Hello Kit

7 electronic modules and 5 cardboard projects to train kids' hands-on ability.
No coding require.

MODEL No. CRB0000HK



8+

Explore Kit

13 electronic modules and 12 projects, which will help you lay a solid foundation for programming.
No coding require.

MODEL No. CRB0000LK



10+

Inventor Kit

Compatible with microbit V2 and LEGO block, make your own invention trip by Coding Instantly!

MODEL No. CRB0000MK



10+

Creator Kit

Code to build hardware and programming interactive projects with UNO.
You will enjoy different fun of programming.

MODEL No. CRB0000AK



10+

Master Kit

Creating Your Own Products!
Compatible with ESP32, 6 modules, 16 projects,
3 fully functional products for you to explore.

MODEL No. CRB0000PK



10+

All in one pack Kit

You will get Hello Kit x 1, Explorer Kit x 1,
Inventor Kit x 1, Creator Kit x 1, Master Kit x 1

MODEL No. CRK00066A

Raspberry Pi All-in-One Kit

CrowPi Series

All in One Raspberry Pi Laptop & STEM Learning Platform

- ✔ Convert between playing and learning in second
- ✔ Engineer your own electronics projects
- ✔ More than 80 programming courses
- ✔ Support multiple operating systems



CrowPi L

MODEL No. SER35001L Jun, 2022

CrowPi L is a lite version born out of CrowPi2, and “L” stands for Lite, Light, and Laptop. CrowPi L is a real Raspberry Pi computer designed for programming beginners.



CrowPi2

MODEL No. SER35002P Jun, 2020

CrowPi2 comes with a sensor development board featuring with 22 necessary sensors, such as buzzer, RGB LED, relay and so on, making it more convenient for students or makers to learn hardware electronics.



CrowPi

MODEL No. SES14002K May, 2018

CrowPi is a development board equipped with 7 inch display that can help you learn Raspberry Pi in an easier way.

CrowBot-BOLT



CrowBot-BOLT is an open source smart programming car powered by an ESP32 chip. It has a wealth of sensors(such as a light sensor, ultrasonic sensor, and line Tracking Sensor), comes with Wifi and Bluetooth functions, and can meet a variety of programming environments like Letscode, Micropython, and Arduino. It can quickly realize functions such as light tracking, line tracking, obstacle avoidance, remote control, and light show.



Infrared Tracking



Bluetooth and WiFi Control (ESP32)



Four RGB LEDs



Light Following



Buzzer



Infrared Remote Control



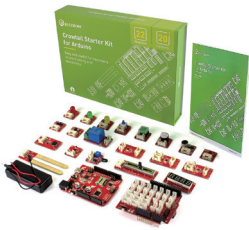
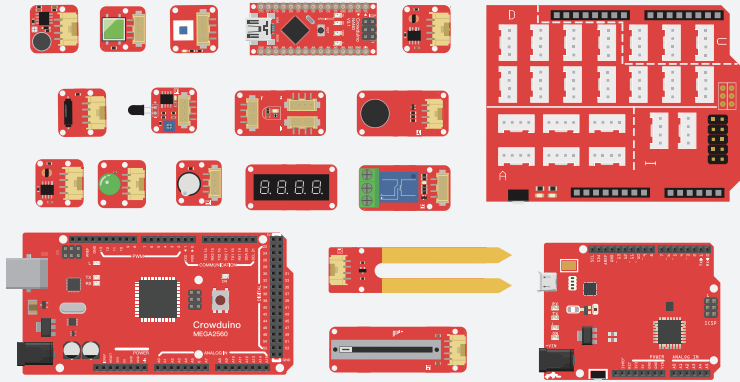
Programmable Keys



Ultrasonic Obstacle Avoidance



Double-Wheels Front Drive



MODEL No. SEA0001T

Crowtail
Starter Kit for Arduino



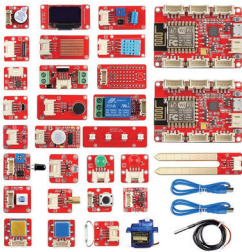
MODEL No. SEA0002T

Crowtail
Advanced Kit for Arduino



MODEL No. SEA0003T

Crowtail
Deluxe Kit for Arduino



MODEL No. CT0917KIT

ESP8266
NodeMCU IOT Kit



MODEL No. SEM0001T

Crowtail
Starter Kit for Micro:bit



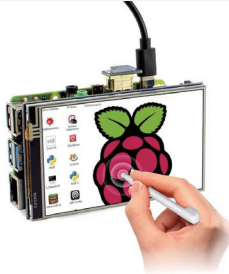
MODEL No. SER0001P

Crowtail
Starter Kit for Raspberry Pi

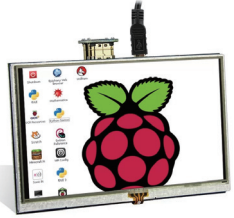
Display Series



MODEL No. RPA03510R
 Elecrow RR035 3.5 Inch
 480*320 TFT Display with
 Touch Screen for
 Raspberry Pi



MODEL No. DIS10204D
 RR040I 4 inch HD
 800*480 Resolution IPS TFT
 Touch Screen Display for
 Raspberry Pi



MODEL No. RPA05010R
 Elecrow RR050 5 Inch
 800*480 Resitive
 Touch Screen TFT Display for
 Raspberry Pi B+/2B/3B/4B



MODEL No. AUS25507D
 RC050 5 inch
 800*480 Capacitive
 Touch LCD Display for
 Raspberry Pi/ PC/ SONY PS4



MODEL No. DIS00005R
 RC050S HD 5 Inch
 800*480 Capacitive
 Touch Monitor Built-in
 Speaker with Backlight Control



MODEL No. RPA07800R
 7 Inch 1024*600
 TFT Display for
 Raspberry Pi B+
 Pcdduino Banana Pi



MODEL No. ESP01215E
 Elecrow
 RC070 7 inch 1024*600
 LCD Display with
 Touch Screen



MODEL No. DPM50080D
 RC070P 7 Inch 1024*600
 Raspberry Pi Monitor
 Touchscreen Capacitive IPS
 Display with Built-in Speaker



MODEL No. DIS00008R
 SH080 8 Inch Portable
 LCD Display 1280*800
 Resolution Monitor
 Built in Speakers

Display Series



MODEL No. DISSF101P

SF101T
10.1 Inch Touchscreen
1920*1080 IPS Monitor for
Raspberry Pi



MODEL No. CMS01101D

Meteor Screen
10.1" IPS Capacitive
Touch Screen with
RGB Animated light



MODEL No. CRV00114L1P

CrowVision
11.6" Capacitive Touch Screen
Portable HD 1366*768
IPS LCD Display



MODEL No. DIS12151G

GC1016 10.1" TFT-LCD
Monitor 1280*800 Color Screen
with AV1 VGA/HD BNC USB
Input Built-in Speaker



MODEL No. CRV13319T

CrowVi VF133T
13.3 Inch Display
1920*1080 HD IPS Portable
Monitor with Touchscreen



MODEL No. DIS19206D

MF156D
15.6 inch Ultra-thin Portable
Monitor 1920*1080
Resolution Display



MODEL No. DIS79340P

Elecrow
7.9 inch long strip display
400*1280 IPS Touch Screen
portable monitor kit



MODEL No. DIS88240P

Elecrow
8.8 inch display 1920*480 IPS
Screen LCD panel Raspberry Pi
Compatible Monitor




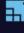

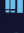


MODEL No. DIS14688P

14 inch 1920*550
IPS Display CPU
monitoring screen
Real-time AIDA64

HMI Display

ESP32 Display

HMI Module Basic Series

-  ESP32 Chip, dual-core processor
-  Support LVGL
-  Multiple external interfaces, Compatible with Crowtail
-  16 Learning tutorials
-  Abundant opensource material
-  Support Arduino IDE, Lua RTOS, Espressif IDF, Micro Python



MODEL No. DIS03024H

ESP32 Display
2.4" Intelligent
Touch Screen Wi-Fi&BLE
240*320 HMI Display



MODEL No. DIS04028H

ESP32 Display
2.8" Intelligent
Touch Screen Wi-Fi&BLE
240*320 HMI Display



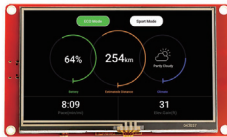
MODEL No. DIS05035H

ESP32 Display
3.5" Intelligent
Touch Screen Wi-Fi&BLE
320*480 HMI Display



MODEL No. DIS06043H

ESP32 Display
4.3" Intelligent
Touch Screen Wi-Fi&BLE
480*272 HMI Display



MODEL No. DIS07050H

ESP32 Display
5.0" Intelligent
Touch Screen Wi-Fi&BLE
800*480 HMI Display



MODEL No. DIS08070H

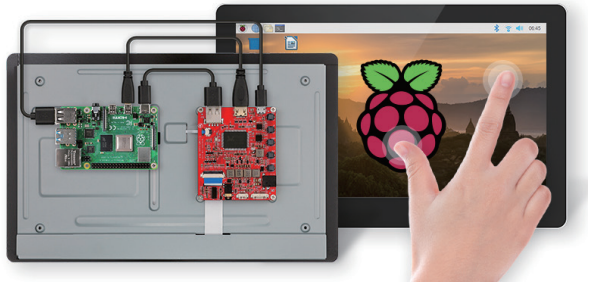
ESP32 Display
7.0" Intelligent
Touch Screen Wi-Fi&BLE
800*480 HMI Display

CrowVision 7"/11.6"

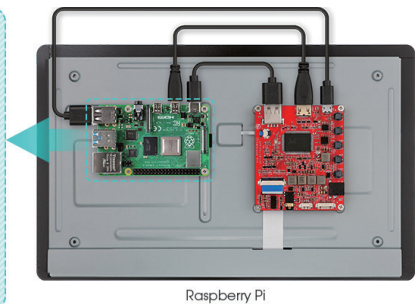
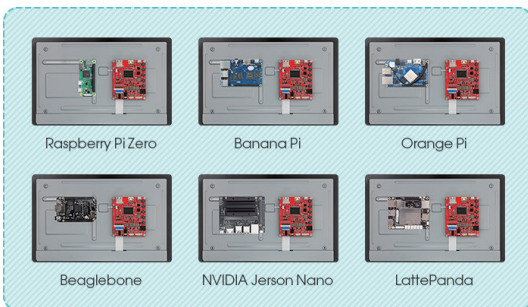
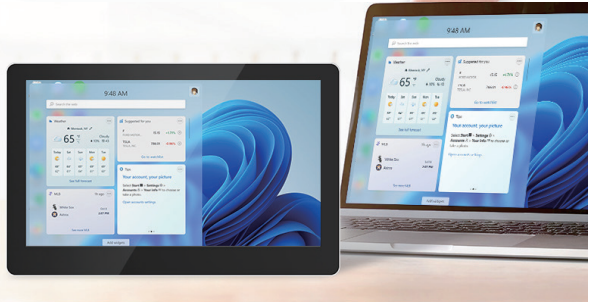
Super Versatile, Suitable for DIY Projects Support Most SBCs & Host Devices



Support Most Single Board Computers & Host Devices



Support Most OS





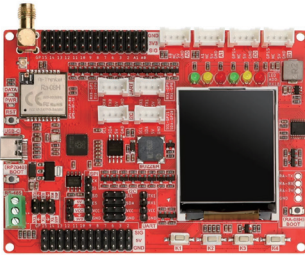
ESP Terminal
With ESP32 3.5 inch parallel
480*320 TFT capacitive touch
display(RGB by chip ILI9488)

MODEL No. DLC35010R Mar, 2023



ESP Terminal
3.5 inch 480*320 SPI TFT
capacitive touch display
with OV2640 camera

MODEL No. DLC35020S Mar, 2023



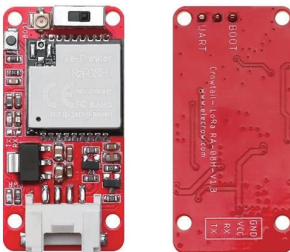
RP2040 LoRaWAN RA
08H Development Board
(868Mhz/915Mhz)

MODEL No. CRT01259B Apr, 2023



Crowtail
4G SIM A7670E Module GPS
Breakout Board support
GPS/GLONASS/BDS

MODEL No. CRT01260S Apr, 2023



Crowtail
Lora RA-08H/LoRaWAN Module

MODEL No. CRT01158H Oct, 2022



Arduino Automatic Smart Plant
Watering Kit

MODEL No. AAK90039K Sept, 2017

GrowCube

Smart Automatic Watering Kit



Apr, 2022
MODEL No. AAK45440K



Reliable Soil
Moisture Sensor



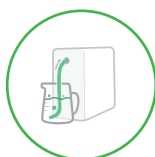
APP Control



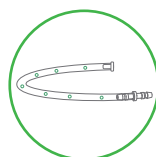
4 Channels



1.5L Large Capacity
Water Tank



External Water
Inlet Design



Original
Nozzle Design



Device
Self-protection



Optional Network
Configuration Mode



Three
Watering Modes

CrowView

Ultimate 14" Portable Ultralight Dual Monitor



14"
16:9 Screen



1080P
Full HD monitor



178°
IPS Monitor



400cd/m²
Brightness



60Hz
Refresh rate



72%
NTSC Color



8bit
color depth



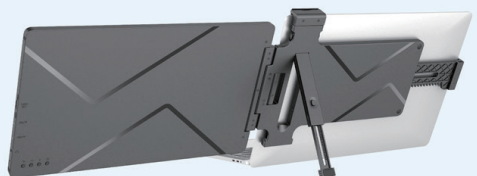
800:1
Contrast Ratio



ULTRALIGHT
ABS+PC Material



DESIGN



Partner Sellers' Products

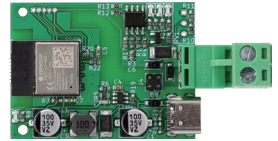
We focus on creative DIY electronics projects, great projects designed by partner sellers are here to meet your needs.



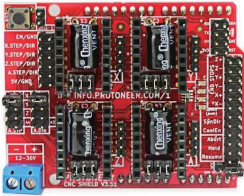
AS7331 UVA/B/C
Light Sensor Breakout



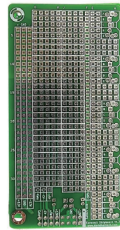
Esp32-Stick-PoE-A



EBUS to WiFi
adapter module v6.1



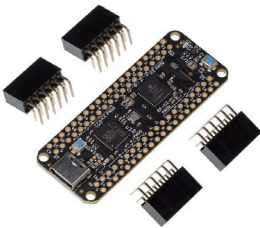
Arduino CNC Shield V3.5.1
GRBL v0.9 compatible
Uses Pololu Dr



Eurorack Stripboard



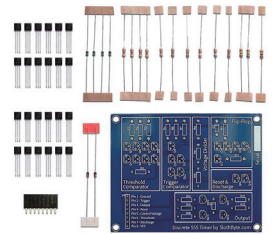
Digital MEMS Microphone



pico-ice RP2040 plus
Lattice ICE40UP5K FPGA



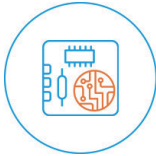
DEEJ Physical Volume Mixer
Electronics Kit



Discrete 555 Timer Kit

Our Service

Dedicated to “Bringing Your Innovative Ideas to Life”, Elecrow provide professional technical support and advanced manufacturing services (PCB manufacturing, 3D printing, wood & acrylic laser cutting, component sourcing, molding, CNC milling, sub-assembly, and kitting services, etc.) to create a maker-oriented PCB & Open Hardware & Market Place.



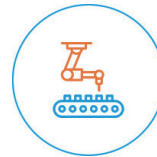
PCB Manufacturing



Component Sourcing Services



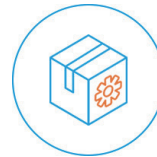
PCB Assembly Services



Sub-assembly & Kitting Services



Partner Selling



Drop Shipping



Warehousing Services



Flashing & Testing Services



E-mail: info@elecrow.com

Tel/Fax: (86-755) 23204330

Website: www.crowpi.cc

Website: www.elecrow.com

Facebook: [@elecrow.openhardware](https://www.facebook.com/elecrow.openhardware)

Twitter: [@Elecrow1](https://twitter.com/Elecrow1)

YouTube: [@Elecrow](https://www.youtube.com/@Elecrow)

Address: 5th Floor, Fengze Building B, Nanchang Huafeng Industrial Park,
Hangcheng Street Hangkong Road, Baoan District, Shenzhen City, China, 518126



www.elecrow.com